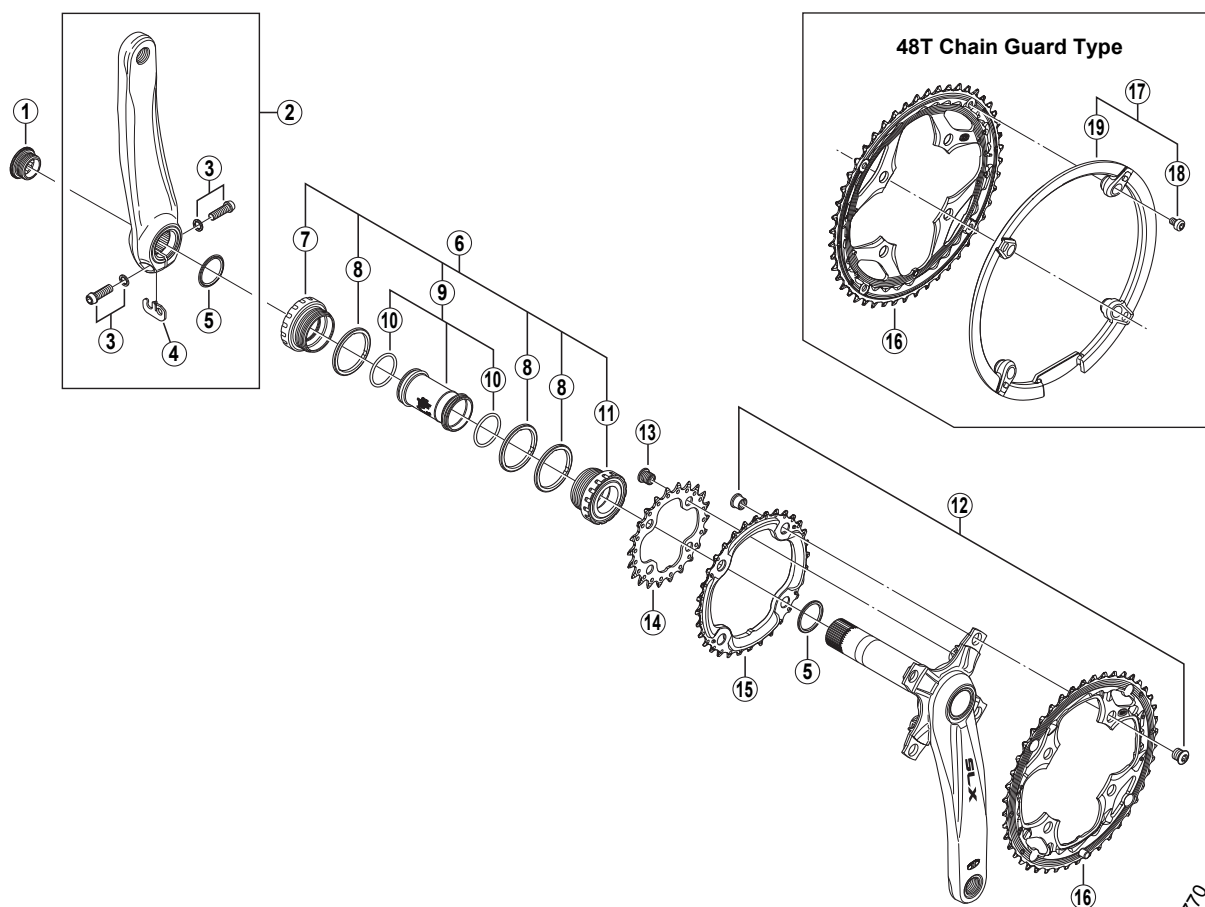


SHIMANO SLX Front Chainwheel FC-M660



- Chaining teeth combinations: 44 - 32 - 22T / 48 - 36 - 26T
- Bolt circle diameter: 104 mm... (For outer gear and middle gear), 64 mm... (For inner gear)

ITEM NO.	SHIMANO CODE NO.	DESCRIPTION	INTERCHANGEABILITY		
1	Y-1F8 11100	Crank Arm Fixing Bolt	A	B	
2	Y-1KF 98010	Left Hand Crank Arm 170 mm	B	B	B
	Y-1KF 98020	Left Hand Crank Arm 175 mm	B	B	B
* 3	Y-1KS 98030	Clamp Bolt (M6 x 19) & Washer	B	B	B
4	Y-1FU 98120	Plate	A	A	A
5	Y-1F3 16000	Ring	A	A	A
6	Y-1J1 98070	Adapter Unit	A	B	B
7	Y-1J1 98080	Left Hand Adapter (B.C.1.37" x 24T) English Thread	A	B	B
8	Y-1F8 13000	Spacer (2.5 mm)	A	A	A
9	Y-1E5 98210	Inner Cover & O-Ring	A	A	A
10	Y-1TF 21000	O-Ring	A	A	A
11	Y-1J1 98090	Right Hand Adapter (B.C.1.37" x 24T) English Thread	A	B	B
12	Y-1KF 98030	Double Gear Fixing Bolt (TORX [®] **/M8 x 8.5) & Nut (4 sets)	B	B	B
* 13	Y-1KF 98110	Inner Gear Fixing Bolt (TORX [®] **/M8 x 8.5 / 4 pcs.)	B	B	B
14	Y-1KF 22000	Chainring 22T (Black)		B	
	Y-1KS 26000	Chainring 26T (Black)			
15	Y-1KF 98040	Chainring 32T		B	
	Y-1KF 98050	Chainring 36T (Silver)			
	Y-1KF 98060	Chainring 44T (Black)		B	
16	Y-1KF 98070	Chainring 48T (Black)			
	Y-1KF 98080	Chainring 48T (Black) for Chain Guard			
17	Y-1KF 98090	Chain Guard for 48T & Fixing Bolts			
18	Y-1KF 98100	Chain Guard Fixing Bolt (4 pcs.)			
19	Y-1F9 12100	Chain Guard for 48T			

FC-M770
FC-M760
FC-M600-3

A: Same parts.
B: Parts are usable, but differ in materials, appearance, finish, size, etc.
Absence of mark indicates non-interchangeability.

** TORX is a registered trademark of Camcar LLC.

Aug.-2009-2790C
© Shimano Inc. P

Specifications are subject to change without notice.

SHIMANO