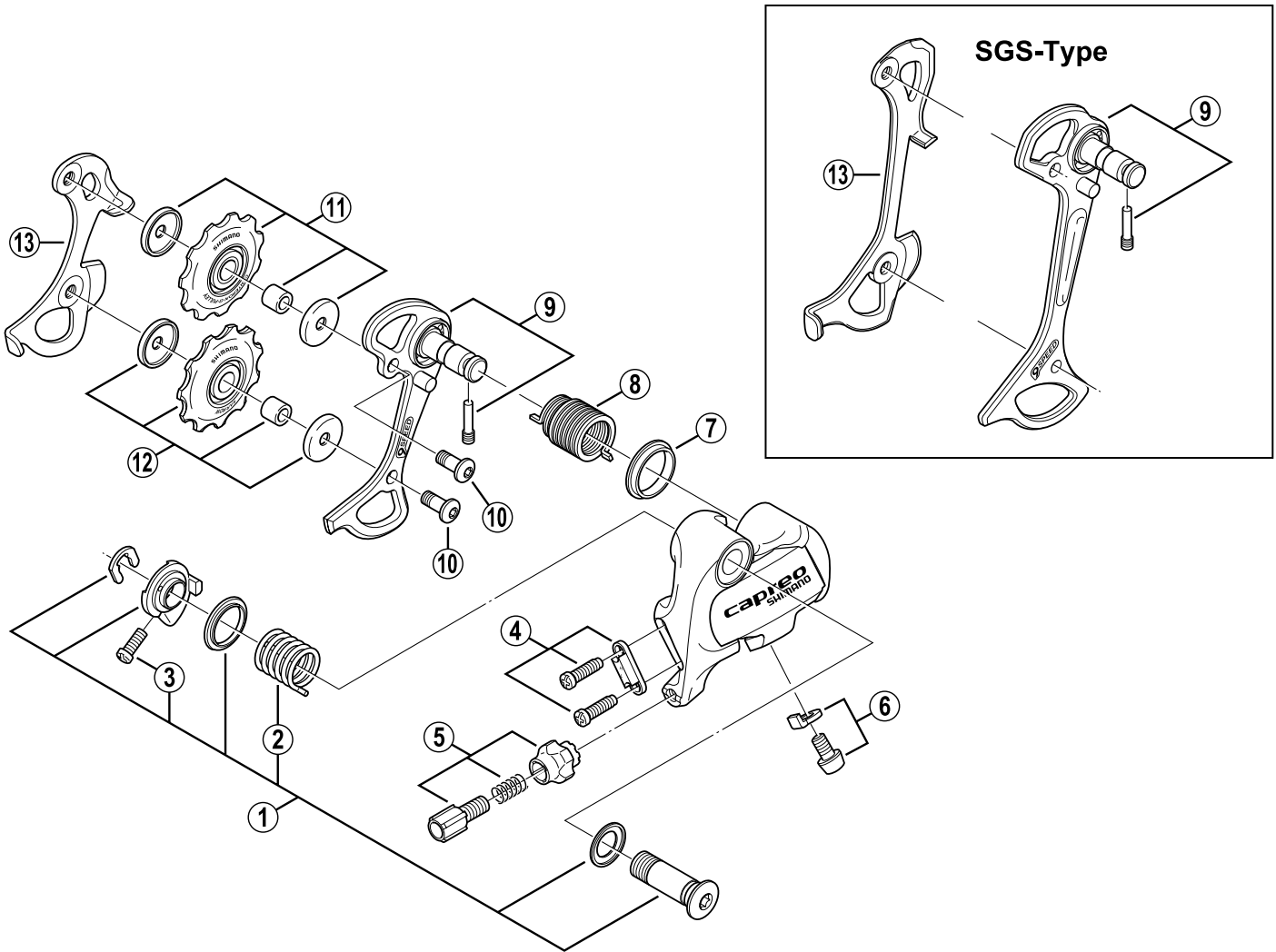


SHIMANO CAPREO Rear Derailleur (9-Speed)

RD-F700-SS Short Cage

RD-F700-SGS Super Long Cage



Q'TY	ITEM NO.	SHIMANO CODE NO.	DESCRIPTION
	1	Y-5TS 98010	B-Axle Assembly
	2	Y-5TJ 27100	B-Tension Spring
	3	Y-556 25030	B-Tension Adjusting Screw (M4 x 12)
	4	Y-5TK 98020	Stroke Adjusting Screws (M4 x 14.5) & Plate
	5	Y-5V4 98010	Cable Adjusting Bolt Unit
	6	Y-5TD 98010	Cable Fixing Bolt (M5 x 8.5) & Plate
	7	Y-5UC 14000	P-Seal Ring
	8	Y-5UC 12100	P-Tension Spring
	9	Y-5V4 98020	Outer Plate Assembly (SS-Type)
	9	Y-5V4 98060	Outer Plate Assembly (SGS-Type)
	10	Y-569 54400	Pulley Bolt (M5 x 13.95)
	11	Y-5UN98060	Guide Pulley Unit
	12	Y-5UN98070	Tension Pulley Unit
	13	Y-53Z 08200	Inner Plate (SS-Type)
	13	Y-5TP 10400	Inner Plate (SGS-Type)